

WELCOME

Back to School Night 2024-25

6th grade
Timber Lane Elementary

When you enter this

CLASSROOM...

- You are **amazing**.
- You are **important**.
- You are an **author**.
- You are a **scientist**.
- You are an **explorer**.
- You are a **risk taker**.
- You are a **reader**.
- You are a **friend**.
- You are a **learner**.
- You are **heard**.
- You are **respected**.
- You are **welcome**.
- You are **loved**.

READ
MORE
BOOKS



A Little About Us



Ms.
Sabatino

Mr. Jonas-This is my 25th year of teaching but 2nd at Timber Lane. This is going to be a particularly great year! I feel like lucky to be at Timber Lane teaching your kids.

Ms. Sabatino- This is my 5th year teaching, and my 3rd year at Timber lane. I love teaching and look forward to this year with your students!



Mr. Jonas

Ms. Geiger-This is my 6th year teaching and my 1st year at TLES! I'm so excited to teach Language Arts to your students!



Ms. Geiger

A Little About Us

Mr. Taggart- This is my 4th year at Timber Lane, I will be supporting our ESOL students.

Ms. Fay-This is my 2nd year at TL. I support reading and writing Tuesdays, Wednesdays, & Thursdays.

Ms. Zervoulas - This is my 12th year teaching and my 2nd year at TLES, supporting special education. I love going to the farmers market, movie nights and a good cup of coffee!

Mrs. Norman- I started at TL when our 6th graders were in kindergarten! I'll support reading/writing this year.



Mr.
Taggart



Mrs.
Norman



Ms. Zervoulas



Ms. Fay

Our School Beliefs

- We commit to building supportive partnerships with families and the community.
- We believe all students are capable of meeting high expectations.
- We guarantee access to meaningful and rigorous learning experiences for all.
- We will foster a love of learning and an awareness of self/others.
- We will guarantee access to a safe and welcoming community that values relationships and students' strengths/identities.
- We will provide responsive instruction to meet students where they are both socially-emotionally and academically.

How You Can Support Your Child at School

- Water bottle
- Approx. 9 hours of sleep per night (CDC)
- No technology in the bedroom after bedtime
- Encourage/discuss the importance of eating lunch
- Can bring a healthy/easy to eat snack (no candy)
- Help your child with healthy technology goals
- Organization

Student Attendance

Attendance is taken each day during morning meeting. School begins at 8:50 and ends at 3:35. Learning begins right away, so it is important to arrive on time!

Please call the attendance line (703) 206-5331 **each day** your child will be absent, tardy, or leaving early.

Every hour counts! If your student has an appointment for part of the day, we will work with you to arrange for a late arrival or early dismissal. **Please plan to send your student to school for any part of the day they can attend.**



©Attendance Works

Attend Today, Achieve Tomorrow



#schooleveryday



©Attendance Works

Asista Hoy, Tenga Éxito Mañana



#schooleveryday

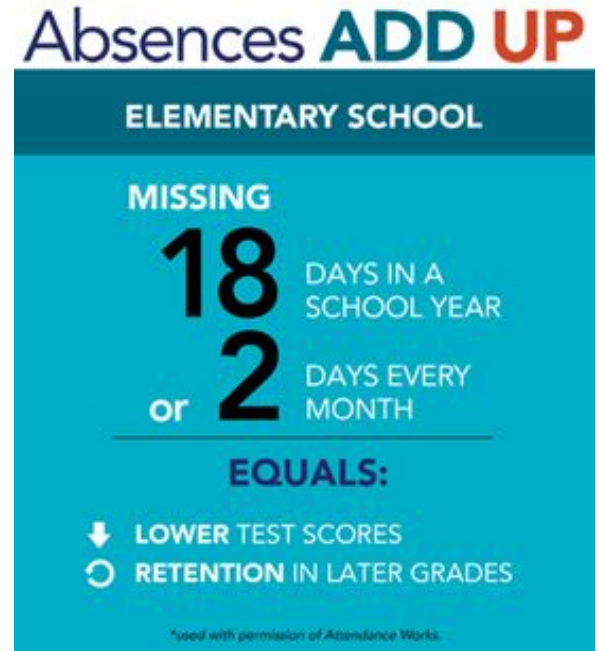
#Schooleveryday

This year Timber Lane has a goal to decrease absences for any reason. Absences impact:

- Learning
- Sense of belonging
- Achievement

Last year, about 16% of our TLES students missed 18 days or more.

There are many reasons daily attendance may be a challenge and we are here to help! Please reach out to us if you are experiencing difficulties getting your child to school. We will work with you to help move us towards our goal of **#Schooleveryday!**



When Students Are Sick

Protocols have been updated since the height of the pandemic. Students with a light cough, runny nose, or stomach ache **should** come to school. Students will no longer be sent home for these symptoms alone.



Send to school:

- Light cough, sneezing, runny nose
- Mild stomach ache
- Was sick but now fever-free for 24 hours



Keep at Home:

- Fever
- Vomiting or diarrhea
- Severe illness

Schoology

Teachers will add resources and assignments on schoology.

Please check Schoology if you are looking for an assignment or link

Schedule

9:00-10:00 Content
9:30-10:00 Intervention
10:00-11:00- Specials
11:00-11:30 recess
11:30-1:15 Block A
1:15-1:45 Lunch
1:45-3:30 Block B
3:30 Dismissal





Fairfax County
PUBLIC SCHOOLS
ENGAGE • INSPIRE • THRIVE

Language Arts Updates for Back to School Night

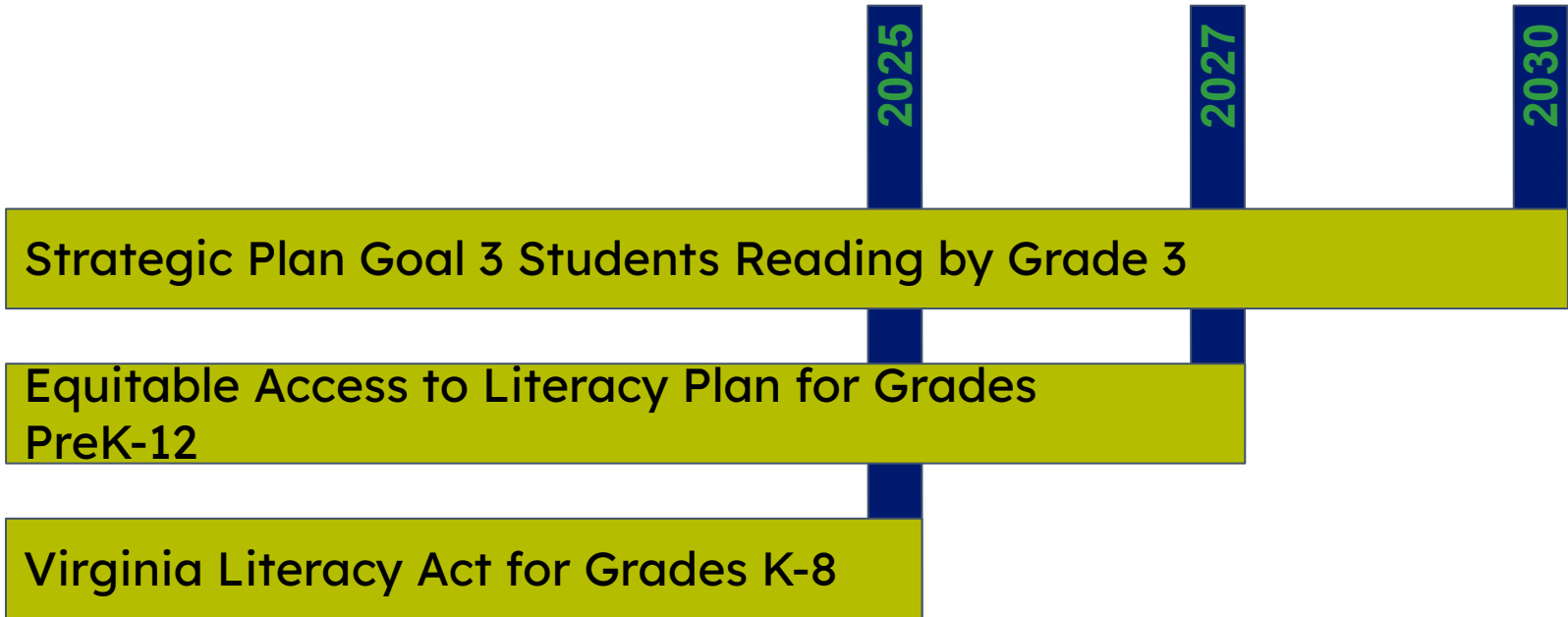
SY 24-25



FCPS LITERACY

Learning and Growing Together!

Common Plans for Literacy

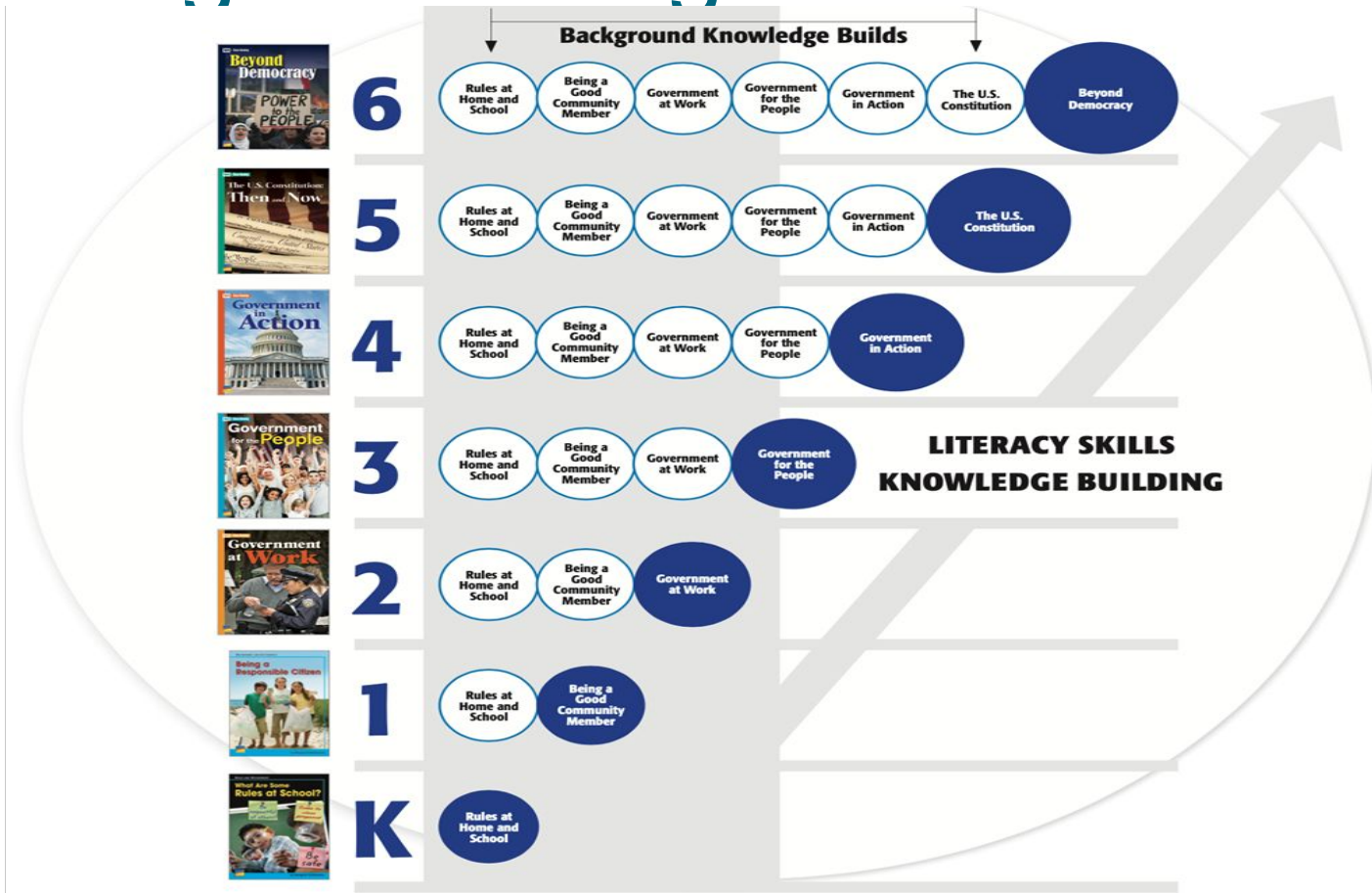


Our New Curriculum for K-6



Unit	Knowledge Strand
1	Life Science
2	Character Matters
3	Government and Citizenship
4	Perspectives in Literature
5	Technology and Society
6	Themes Across Cultures
7	History, Culture, and Geography
8	Earth Science
9	Economics

Growing Knowledge over Time



Essential Questions Get More Complex

Unit 1: Life Science

Plants and Animals Have Needs

Why do living things have different needs?

Kindergarten

Animal Adaptations

How do living things survive in their environment?

3rd Grade

Relationships in Nature

What roles can we play in the balance of nature?

6th Grade

Benchmark Caregiver Website



Explore the [Benchmark Caregiver Website](#) for more resources.

6th Grade MATHEMATICS

Students have math in the morning or afternoon. We teach a mini-lesson and then the students work on independent tasks and use our new online math program: ST Math.

Advanced MATHEMATICS

The students are engaging in the 7th grade math standards by solving real world math problems and engaging in discourse. Students are explaining their mathematical thinking, asking questions, and critiquing the reasoning of others which enables them to become mathematicians.



Sixth Grade Mathematics Yearly Overview

	Week 1	Week 2	Week 3	Week 4	Week 5	Week 6	Week 7	Week 8	Week 9
Quarter 1	Unit 1: <u>Building Community Through the Data</u>		Unit 2: <u>Integers and Inequalities</u>			Unit 3: <u>Rational Numbers and Exponents</u>			
Quarter 2	Unit 4: <u>Coordinate Plane and Congruence</u>		Unit 5: <u>Integer Computation and Estimation</u>					Unit 6: <u>Fraction Computation and Estimation</u>	
Quarter 3	Unit 6 (continued)		Unit 7: <u>One-Step Linear Equations</u>			Unit 8: <u>Proportional Reasoning</u>			
Quarter 4	Unit 9: <u>Measurement and Geometry</u>			Unit 10: <u>Statistical Understanding and Furthering the Cycle of Data</u>		SOL Review and Test, <u>Summative Assessment, Flexible Time</u>			

Seventh Grade Mathematics Yearly Overview

	Week 1	Week 2	Week 3	Week 4	Week 5	Week 6	Week 7	Week 8	Week 9
Quarter 1	<u>Unit 1: Building Community with Data</u>			<u>Unit 2: Rational Numbers and Exponents</u>			<u>Unit 3: Expressions</u>		
Quarter 2	<u>Unit 3 (cont.)</u>	<u>Unit 4: Equations and Inequalities</u>					<u>Unit 5: Proportional Relationships</u>		
Quarter 3	<u>Unit 5 (cont.)</u>			<u>Unit 6: Applications of Proportional Reasoning in Geometry</u>		<u>Unit 7: Rational Number Applications</u>			
Quarter 4	<u>Unit 8: Applications of Expressions and Equations in Geometry</u>				<u>SOL Review and Test, Summative Assessment, Flexible Time</u>				

Conferences

- Report Cards will be given out at the end of each quarter.
 - Q1 ends: October 31
- Fall Conferences:
 - Early November
 - We will send a Sign Up Genius to join your homeroom teacher



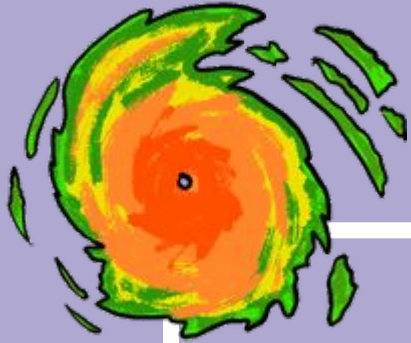


SOCIAL STUDIES

Early American History:
Native American Indians - Civil War

SCIENCE

Astronomy
Weather
Water
Energy



Science Year at a Glance: 6th Grade

Quarter 1

Weather: Earth's atmosphere,
weather patterns, climate

Quarter 2

Astronomy: Planets, gravity,
Earth's rotation, moon

Quarter 3

Water: Use, quality,
chemistry, properties

Quarter 4

Energy: Sources,
transformation, conservation



Homework

6th graders will have homework almost every Monday- Thursday night. Make sure your student is doing their homework every night and turning it in the next day. As the year progresses, they will have more homework.



Family Information for Advanced Academics

All families are invited to attend the following information sessions:

Introduction to AAP & the Continuum of Services Information Night

September 27th at 6pm in the cafeteria

Understanding the Full-Time AAP Screening Process Information Night

October 4th at 6pm in the cafeteria

Reach out to AART, Alyssa Grabel at angrabel@fcps.edu with any questions.

Field Trips!!!

1. National Museum of Asian Art
2. TBD



Talking Points

Please join talking points!
It is a great way for
parents and teachers to
stay in touch





Communicator



Collaborator



Ethical and
Global Citizen



Creative and
Critical Thinker

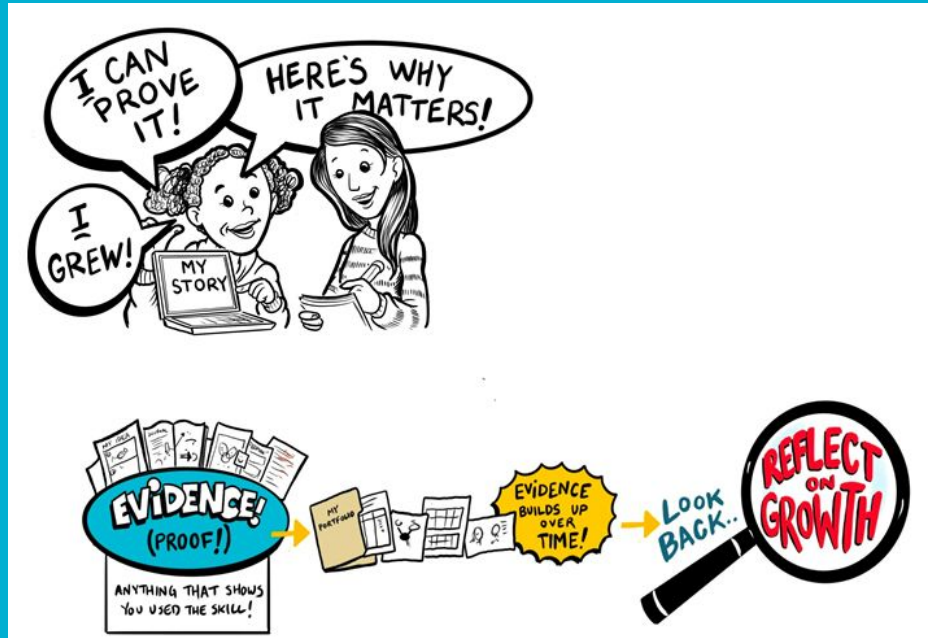


Goal-Directed
and Resilient
Individual



Portrait of a Graduate

All classrooms will choose 2 attributes to focus on this year.





TIMBER LANE ELEMENTARY SCHOOL PTA NEEDS YOU!

Why join the PTA?

- **Our children benefit:** Get to know your teachers, meet new classmates, and reunite with old friends.
- **You make connections:** Get to know teachers and staff, while making life-long friends with other parents in the school.
- **It's good for you:** Socializing with other parents and volunteering in your child's school is fun, healthy and rewarding.
- **The school benefits:** PTA performs to provide supports for school teachers and administration which in turn creates a positive & caring atmosphere in the school.



¡LA PTA DE LA ESCUELA PRIMARIA TIMBER LANE TE NECESITA!

¿Por qué unirse a la PTA?

- **Nuestros niños se benefician:** Conoce a tus profesores, conoce nuevos compañeros de clase y reencuentrate con viejos amigos.
- **Establece conexiones:** Conozca a los maestros y al personal, mientras hace amistades para toda la vida con otros padres en la escuela.
- **Es bueno para ti:** Socializar con otros padres y ser voluntario en la escuela de su hijo es divertido, saludable y gratificante.
- **Los beneficios de la escuela:** La PTA brinda apoyo a los maestros y la administración de la escuela, lo que a su vez crea una atmósfera positiva y solidaria en la escuela.

¡Cómo ponerse en contacto con nosotros!



Check us out at /
Visítanos en:

TimberlanePTA.com



Follow us on Facebook /
Síguenos en Facebook:

Timber Lane Elementary
PTA



Email us at /
Envíanos un email a:

board@timberlanepTA.com

Interested in joining the PTA? / ¿Interesados en unirse a la PTA?



It's easy to join! Visit our website to register:
TimberlanePTA.com

Or sign-up today before you leave!

Membership fee is \$15 per family / \$10 for teachers!

¡Es fácil unirse! Visite nuestro sitio web para
registrarse: TimberlanePTA.com

¡O regístrate hoy antes de irte!

¡El costo de la membresía es de \$15 por familia / \$10
para maestros!

PTA Upcoming Dates

- 9/10: Ice Cream Social @ 5 pm on playground
- 9/12: Restaurant Fundraiser Silver Diner (5 - 8 pm)
- 9/19: Virtual Room Parent Session @ 7:30
- 10/9: First PTA Meeting @ 7 pm in cafeteria (childcare provided)
- 10/12: Garden Cleanup - TLES from 9 - 12 pm
- 11/5: Election Day Bake sale @ TLES

WELCOME

Questions?

When you enter this

CLASSROOM...

- You are **amazing**.
- You are **important**.
- You are an **author**.
- You are a **scientist**.
- You are an **explorer**.
- You are a **risk taker**.
- You are a **reader**.
- You are a **friend**.
- You are a **learner**.
- You are **heard**.
- You are **respected**.
- You are **welcome**.
- You are **loved**.

